

## Dust filter cartridge 337 NK Quick-Lock

Ø 337 mm, fastened with spring clips

### 1. Features

The Filtration Group Quick-Lock dust filter cartridge is designed for quick and easy mounting, with only a minimal clearance required for installation and dismantling. The conical shape is the outcome of the cartridge's superior strength and flow behaviour. Its performance has been significantly enhanced by the improved cleaning power

#### Characteristics

- High volume flows
- Optimized flow conditions
- Improved cleaning properties
- Easy mounting
- Minimal clearance required
- Worldwide distribution



## 2. Technical data

### Materials

|                         |  |
|-------------------------|--|
| <b>Inner core:</b>      | Galvanized steel   |
| <b>End caps:</b>        | Galvanized steel   |
| <b>Seal:</b>            | Soft PUR material  |
| <b>Filter material:</b> | Ti 07/1 - Electrostatic conductive polyester fleece with PTFE membrane |
|                         | Ti 08 - Electrostatic conductive polyester fleece                      |
|                         | Ti 15 - Polyester fleec  |
|                         | Ti 19/2 - Cellulose/polyester carrier with Polypropylen meltblown      |
|                         | Ti 56/2 - Polyester fleece with PTFE membrane                          |
|                         | other filter media on request  |

### Cleaning filter elements without banderole

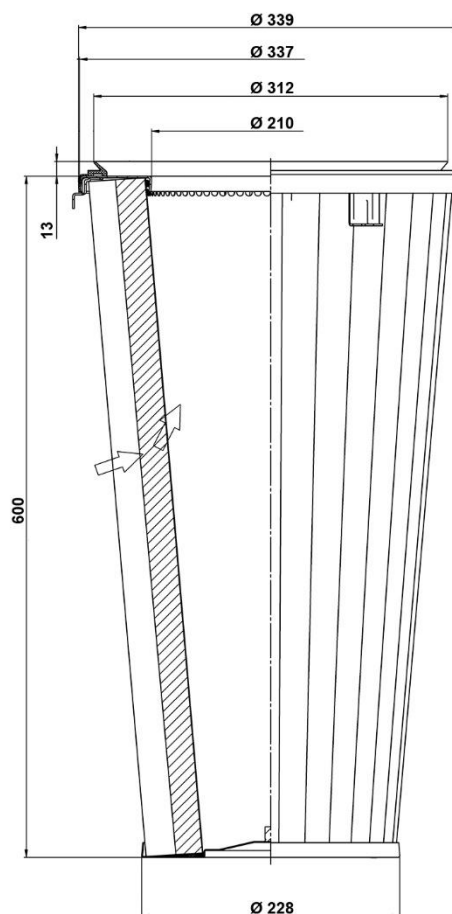
|                               |                            |
|-------------------------------|----------------------------|
| <b>Valve:</b>                 | conical rotating wing      |
| <b>Cleaning pressure:</b>     | 3 bar - 4 bar (max. 6 bar) |
| <b>Differential pressure:</b> | max. 15 mbar               |

### Cleaning filter elements with banderole

|                               |                            |
|-------------------------------|----------------------------|
| <b>Valve:</b>                 | Multijetdüse G1            |
| <b>Cleaning pressure:</b>     | 4 bar - 6 bar (max. 7 bar) |
| <b>Differential pressure:</b> | max. 15 mbar               |

For information on the compressed air tank and consumption, see data sheets on cleaning units.

Technical data is subject to change without notice!



## 3. Order numbers

| Order number | Type designation   | Length L [mm] | Filter material | Filter surface [m²] | Max. vol. flow* [m³/h] | Max. operating temperature [°C] | Electrostatic conductive |
|--------------|--------------------|---------------|-----------------|---------------------|------------------------|---------------------------------|--------------------------|
| 70308668     | 852 052 Ti 07-7.5  | 600           | Ti 07/1         | 7.5                 | 900                    | 90                              | yes                      |
| 70308670     | 852 052 Ti 08-7.5  |               | Ti 08           |                     |                        |                                 |                          |
| 70308673     | 852 052 Ti 15-7.5  |               | Ti 15           |                     | 700                    |                                 | no                       |
| 70308678     | 852 052 Ti 19-7.5  |               | Ti 19/2         |                     |                        |                                 |                          |
| 70308675     | 852 052 Ti 56-7.5  |               | Ti 56/2         |                     | 900                    |                                 |                          |
| 70308725     | 852 062 Ti 07-12.5 | 985           | Ti 07/1         | 12.5                | 1200                   |                                 | yes                      |
| 70302873     | 852 062 Ti 08-12.5 |               | Ti 08           |                     |                        |                                 |                          |
| 70308734     | 852 062 Ti 15-12.5 |               | Ti 15           |                     | 1100                   |                                 | no                       |
| 70308739     | 852 062 Ti 19-10   |               | Ti 19/2         | 10                  |                        |                                 |                          |
| 70308736     | 852 062 Ti 56-12.5 |               | Ti 56/2         | 12.5                | 1200                   |                                 |                          |
| 70302463     | 852 032 Ti 07-15   | 1166          | Ti 07/1         | 15                  | 1600                   |                                 | yes                      |
| 76360564     | 852 032 Ti 08-15   |               | Ti 08           |                     |                        |                                 |                          |
| 70302466     | 852 032 Ti 15-15   |               | Ti 15           |                     | 1400                   |                                 | no                       |
| 70302470     | 852 032 Ti 19-12   |               | Ti 19/2         | 12                  |                        |                                 |                          |
| 70302467     | 852 032 Ti 56-15   |               | Ti 56/2         | 15                  | 1600                   |                                 |                          |

\* These values may vary depending on the nature of the dust and the composition of the gas.

## 4. Installation

The dust filter cartridge can be installed and removed on the dirty side with spring clips (Quick-Lock system - no tools required).

The spring clips should be fastened to the filter plate as shown in the drawing.

\*1 = Filter element holder

\*2 = Fixing clip

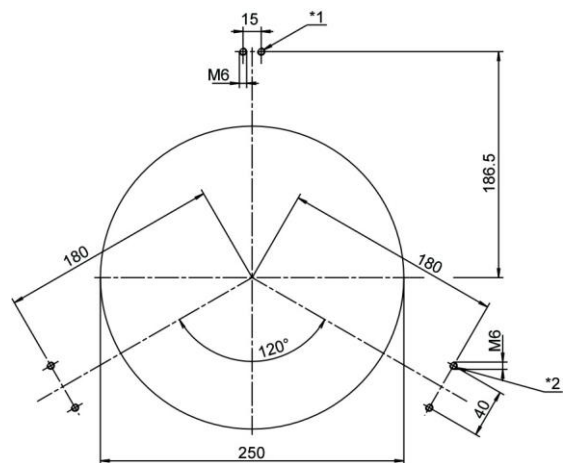


Fig. 1

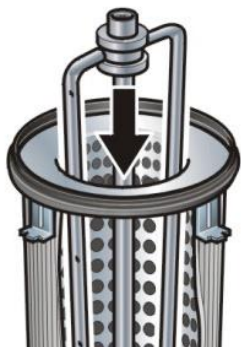


Fig. 2

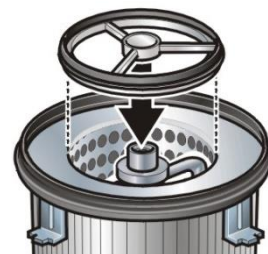


Fig. 3



Fig. 4

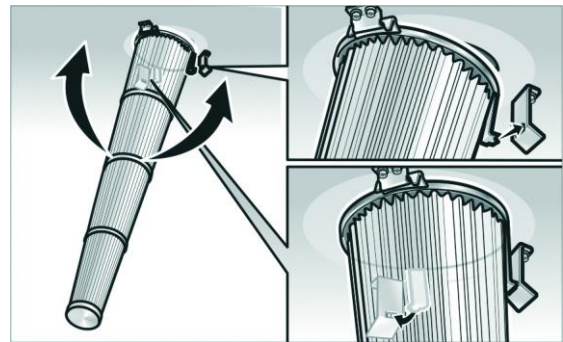


Fig. 5

## 5. Accessories

| Order number | Designation   |
|--------------|---|
| 76956668     | Quick-Lock fastening set - 1x (1 filter element holder, 2 fixing clips, screws) |
| 76956676     | Quick-Lock fastening set - 10x  |
| 70363715     | Cleaning unit conical rotating wing RLK-32 06 ROH A1                            |
| 70368951     | Cleaning unit conical rotating wing RLK-32 10 ROH A1                            |
| 70327511     | Cleaning unit conical rotating wing RLK-32 12 ROH A1                            |
| 70304809     | Cleaning unit multi-jet nozzle MJD-32 00 ROH A1 Quick-Lock                      |

## 6. Cleaning

Two cleaning systems are available for conical dust filter cartridges with a diameter of 328 mm.



### Filtration Group multi-jet nozzle

The optimized geometry of the multi-jet nozzle guarantees excellent cleaning results with a significantly lower noise level. The multi-jet nozzle is available from Filtration Group in aluminium or stainless steel. It can also be purchased as part of the Filtration Group MJD cleaning unit, comprising the nozzle, a tripod and various small assembly components. The tripod maintains an optimum distance from the cartridge to ensure maximum cleaning efficiency.



### Filtration Group conical rotating wing

The baffle plate closes during cleaning and the rotating wing begins to turn. The large number of pulsed air jets that are discharged from the wing elements guarantee gentle, uniform cleaning over the complete cartridge length. The simultaneous vibratory movement in the pleats generates a significant improvement in cleaning efficiency, particularly with critical dusts. Each pleat is cleaned several times. The filter life is optimized as a result of the rotating wing.

## 7. Design

Please contact us for detailed technical information, any open questions and for general expert advice. Completion of the relevant questionnaire would facilitate in the coordination of all important parameters. Comprehensive documentation on our product range, cleaning units and cartridges can be provided.

Filtration Group GmbH  
Schleifbachweg 45  
D-74613 Öhringen  
Phone +49 7941 6466-0  
Fax +49 7941 6466-429  
industrial.sales@filtrationgroup.com  
industrial.filtrationgroup.com  
shopindustrial.filtrationgroup.com  
70342683.04/2022

Dust filter element 337 NK Quick-Lock