

Translation of the original instructions with installation instructions

Single filter

EG1, EG2

Mat. No. of original instructions
70580771



EG 1



EG 2

1 Table of contents

1	Table of contents	2
2	General safety instructions	2
2.1	Safety instructions for installation and operating personnel	2
2.2	Warning structure.....	2
2.3	Warning symbols used.....	2
2.4	Other symbols used	3
3	Glossary.....	3
4	General information	3
4.1	Manufacturer.....	3
4.2	Information about the Instruction Manual.....	3
5	Intended application	3
6	Functional description.....	4
6.1	Main components.....	4
6.2	Operating principle.....	4
7	Technical data	5
7.1	General data	5
7.2	Mounting parts	5
7.3	Filter element	5
7.4	Operating data	5
8	Transport and storage	5
8.1	Transport	5
8.2	Storage	5
9	Installation	5
10	Start-up	5
10.1	Functional test	5
10.2	Start-up	6
11	Normal operation	6
12	Shutting down the single filter	6
12.1	Temporary shut-down	6
12.2	Prolonged shut-down (>48 h).....	6
13	Troubleshooting.....	7
14	Maintenance	7
14.1	Inspection and maintenance schedule.....	7
14.2	Preliminary maintenance steps	7
14.3	Removing the filter cover and Filter element.....	8
14.4	Cleaning single filter and Filter element.....	8
14.4.1	Cleaning the filter housing	8
14.5	Replacing the cover seal.....	8
15	Dimension drawings	9
15.1	Dimension drawings of the EG1	9
15.2	Dimension drawings of the EG2 DN65-DN150.....	10
15.3	Dimension drawings of the EG2 DN20-DN50 ..	11
16	Part drawing	12
17	List of parts.....	13
17.1	EG2 0.7040.....	13
17.2	EG2 1.4408.....	14
17.3	EG1 GGG40	15
18	Empfohlene Ersatzteile.....	15
18.1	EG2 0.7040.....	15
18.2	EG2 1.4408.....	16
18.3	EG1 0.7040.....	16
19	Declaration of incorporation	17
20	Declaration of conformity.....	21
21	Index.....	22

2 General safety instructions

2.1 Safety instructions for installation and operating personnel

This Instruction Manual contains important safety instructions which must be heeded at all times during installation, normal operation and maintenance. Non-observance can result in the following risks to persons and the environment as well as in damage to the machine or plant:

- ⇒ Failure of critical functions of the machine or plant or of its component parts.
- ⇒ Danger to persons from electrical or mechanical effects as well as from chemical reactions.
- ⇒ Danger to the environment owing to the leakage of hazardous substances.

Before installation/start-up:

- Read the Instruction Manual carefully.
- Make sure that installation and operating personnel are adequately trained.
- Make sure the contents of the Instruction Manual are fully understood by the responsible persons.
- Define areas of responsibility and competence.
- Prepare a maintenance schedule.

During operation of the plant:

- Keep the Instruction Manual handy at the place of use.
- Heed the safety instructions. Always operate the machine/plant in accordance with its ratings.

If in doubt:




- Consult the manufacturer.

2.2 Warning structure






Where possible, warnings are structured according to the following system:

Signal word	
Possibly with symbol	Nature and source of the danger ⇒ Potential consequences of non-observance • Action to avert the danger.

2.3 Warning symbols used

 DANGER!
Immediate danger! ⇒ Non-observance will result in serious or fatal injury.
 WARNING!
Potentially dangerous situation! ⇒ Non-observance can result in serious or fatal injury.
 CAUTION!
Potentially dangerous situation! ⇒ Non-observance can result in minor or moderate injuries.
CAUTION! (without a symbol)
Potentially dangerous situation! ⇒ Non-observance can result in property damage.

2.4 Other symbols used

	Information about environmental protection
	Wear protective clothing!
	Wear goggles!
	Wear a respirator!
	Hand symbol: Indicates general information and recommendations
•	Bullet: Indicates the order in which actions are to be carried out
⇒	Arrow: Indicates responses to actions

3 Glossary

Absolute filter rating:

The diameter of the largest spherical particle that will pass through the filter under defined laboratory conditions.

Initial differential pressure:

Differential pressure at the start of the filtration process (when the Filter element is "clean").

Differential pressure (delta p):

Pressure difference between the dirty side and the clean side.

Filter cake:

Layer that is built up by the solids retained on the surface of the Filter element.

Filtered fluid:

Substance that is filtered.

Filter element:

Cylindrical body consisting of one or more profiled bodies with the corresponding filtration fineness or fitted with wire cloth. The suspension to be filtered flows through this (these) profiled body (bodies). Solids are retained on the inner or outer surface of the Filter element.

Nominal filter rating:

A nominated minimum percentage of the particles that are smaller than the specified rating are retained by the filter.

Suspension (raw suspension):

System of substances that must be filtered, generally consisting of solids in a liquid.

4 General information

4.1 Manufacturer

Filtration Group GmbH
Schleifbachweg 45
D-74613 Öhringen
Phone +49 7941 6466-0
Fax +49 7941 6466-429
fm.de.sales@filtrationgroup.com
www.filtrationgroup.com

4.2 Information about the Instruction Manual

FG Mat.-Nr.: 70580771
Date: 05.12.17
Version: 04

5 Intended application

⚠ DANGER!
PROHIBITED: <ul style="list-style-type: none">• Use for purposes other than that described below without prior consultation with the manufacturer.• Use in potentially explosive atmospheres.• Use with smouldering, burning or adhesive particles.• Use with highly explosive dusts (e.g. aluminium dust, explosives, etc.).
⚠ CAUTION!
This single filter is only allowed to be used in accordance with the operating conditions specified in the contract documentation and in the Instruction Manual. All forms of use which deviate from or exceed the limits of use described above are considered to be contrary to the intended purpose. The manufacturer shall not be liable for any damage resulting from such use.

Use for other purposes is prohibited without prior consultation with the manufacturer!

6 Functional description

6.1 Main components

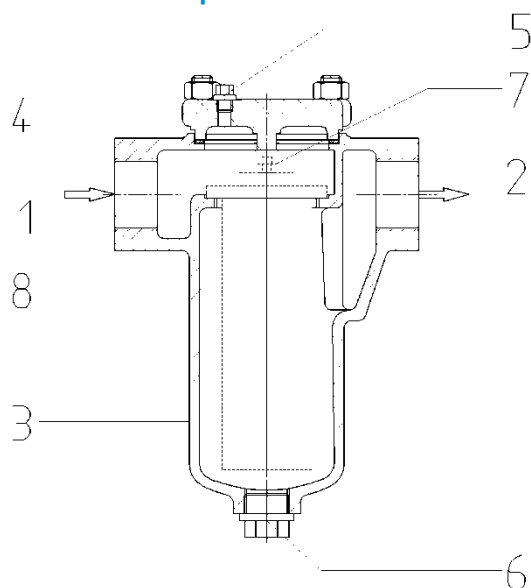


Fig. 1: Diagram of the main components EG1

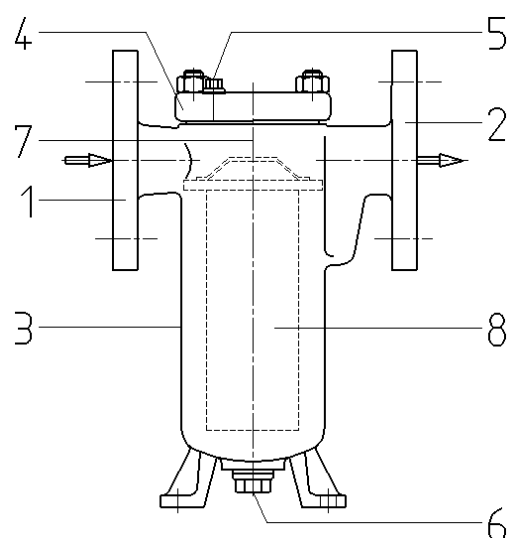


Fig. 2: Diagram of the main components EG2

1	Filter inlet
2	Filter outlet
3	Filter housing
4	Filter cover
5	Vent screw
6	Drain
7	Spring
8	Filter element

6.2 Operating principle

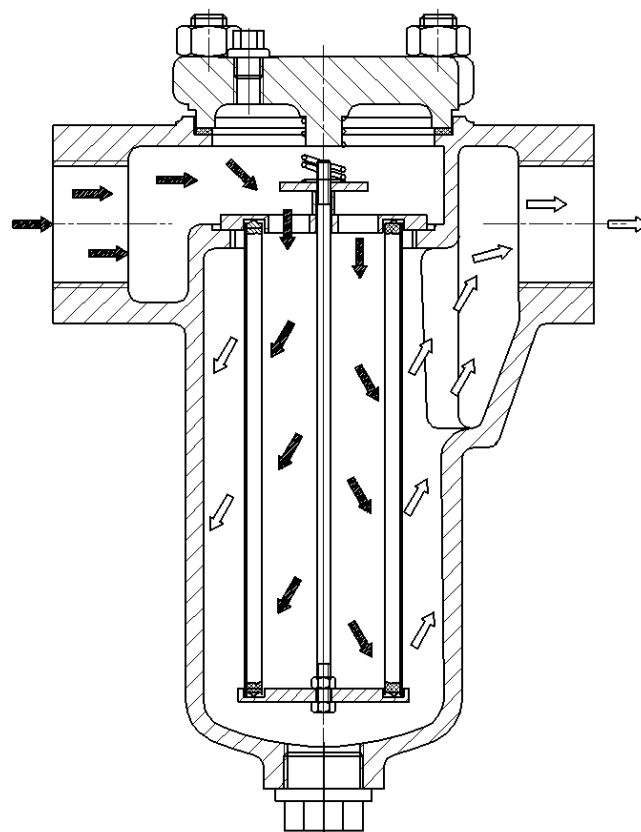


Fig. 3: Filtration principle of the single filter

- 1**
The suspension flows through the filter inlet into the single filter.
- 2**
The suspension flows through the interior of the Filter element.
The particles contained in the suspension settle on the inside of the insert.
- 3**
The filtered fluid enters the clean side and exits the single filter via the filter outlet.
- 4**
On reaching a max. differential pressure of 0,7 bar (optional differential pressure indicator), the filter must be taken out of service and the insert cleaned manually. The filtration process is interrupted when doing so. Refer to section 14.4

7 Technical data

7.1 General data

Filter type Single filter
Series EG1, EG2
Nominal diameter For dimensions, refer to section 15
Weight For dimensions, refer to section 15
Filter housing material GGG40 (0.7040)
Coating (inside) Thermoset plastic (optional) Rilsan
Coating (outside) RAL 5007
Seals C4400

7.2 Mounting parts

Differential pressure indicator optional

7.3 Filter element

Number per canister 1
Material Filter screen 1.4401
Material body 1.4571
Filter rating acc. to customer's requirements

7.4 Operating data

Canister capacity See data sheet
Process temperature max. 80°C
Test overpressure 24 bar
Process overpressure max. 16 bar
Pressure loss Approx. 0.1 bar (clean)
..... Max. 0.7 bar (dirty)
Acceptance Acc. to Pressure Equipment Directive,
..... Art. 13, Art 4, Section 3

8 Transport and storage

8.1 Transport

- Always transport upright
- Avoid vibrations

8.2 Storage

- Always store upright in the original packaging
- Always store in a dry, frost-free room



Seaworthy packaging is specified in the contract documentation as an option.

9 Installation

WARNING!

If the system is installed by unauthorised persons

⇒ Risk of injury

- All warranty claims are rendered invalid
- The plant must be installed by a suitably trained person!

- Provide stress relief for all pipe connections.
- Make sure the filter does not run dry via the pipes when the plant is not operating.
- Provide a bypass pipe if necessary.

10 Start-up

DANGER!

This single filter is not allowed to be put into operation until it has been established that the machine / plant in which it is to be installed complies with the classifications of the acceptance authority.

DANGER!

Danger due to high pressure in the single filter!

⇒ Risk of injury to persons or damage to property

- Do not allow the concentrate to spatter into the atmosphere!

Make sure that:

- ⇒ All foreign particles are removed from the single filter.
- ⇒ All pipe connections are tightened securely.
- ⇒ All screws are tightened.

10.1 Functional test

Differential pressure switch (optional)

- Refer to the enclosed manufacturer's documentation.

10.2 Start-up

CAUTION!

High viscosity

⇒ Damage to property

- If high-viscosity media are used, the filter should not be start with full power of the pump until the filter reaches its normal service temperature

- Slowly open the inlet.
- Vent the single filter with the vent screw (1).

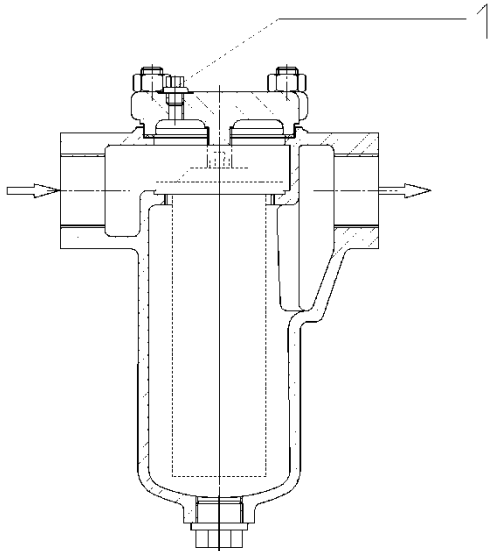


Fig. 4: Venting the filter

Initial differential pressure

- The initial differential pressure varies according to the application.
- General guide:
Installation on discharge side: $\Delta p \leq 0.1$ bar

11 Normal operation

⚠ DANGER!

Danger due to high pressure in the single filter!

⇒ Risk of injury to persons or damage to property

- Do not allow concentrate to spatter into the atmosphere!



- Always dispose of the flush concentrate in a manner which does not pollute the environment or process it professionally!
- Consult the responsible authorities before deciding upon the most suitable disposal method.

- The following must be monitored daily during normal operation:
⇒ Differential pressure

12 Shutting down the single filter

12.1 Temporary shut-down

- Switch to by-pass, if available.
- Switch off pumps.
- Filter must not run dry via the pipelines.

12.2 Prolonged shut-down (>48 h)

- Make sure the inlet and outlet are closed.
- Remove the Filter element (refer to section 14.3).
- Clean the Filter element (refer to section 14.4).
- Reinstall the Filter element.
- Fill the single filter completely with liquid.

13 Troubleshooting

Fault	Possible cause	Remedy
Increased concentration of dirt on clean side	Filter element defective	Check the Filter element and renew it if necessary
Leakage at cover seal	Cover seal defective	Renew the cover seal
Differential pressure too high	Single filter dirty	Clean the single filter
	Contamination level too high	Use a prefilter

14 Maintenance

⚠ WARNING!

If the system is maintained by unauthorised persons

⇒ Risk of injury

- All warranty claims are rendered invalid
- The system must be maintained by a suitably trained person!

Before all maintenance work:

- Shut down the single filter (refer to section 12).
- Take steps to prevent contaminated medium from entering the clean side; discharge the filter via the discharge screw if necessary.
- Take steps to prevent the single filter from being operated again by unauthorised persons.

Do not switch!



Work in progress

Location: _____
This plate may only be removed by: _____



- Wear protective clothing and equipment appropriate to the hazard potential of the medium (e.g. goggles, respirator, protective clothing, etc.).
- Carry out the maintenance work.
- Start up the single filter again (refer to section 10).

14.1 Inspection and maintenance schedule

- Refer also to the contract documentation.

Interval	Component	Activity
Weekly	Single filter	Check for leakage and if necessary replace the seals
Every 6 months	Seal kit	Check for leakage and if necessary replace the seals
	Filter element	Check for damage and if necessary replace
Every 12 months	Filter element	Replace



The necessary inspection and maintenance work is dependent on the particular application. Please consult the manufacturer if necessary.

14.2 Preliminary maintenance steps

⚠ DANGER!

The single filter is pressurised!

⇒ Risk of injury to persons or damage to property

- Make sure the pipe is depressurised prior to opening the single filter.



- Always dispose of the flush concentrate in a manner which does not pollute the environment!
- Consult the responsible authorities before deciding upon the most suitable disposal method.

1

- Pump off or switch to by-pass

2

- Make sure the pipe is depressurised prior to opening the single filter.
- Close the filter inlet and outlet.

3

- Open the drain plug.
 - Open the vent screw.
- ⇒ The single filter is discharged.

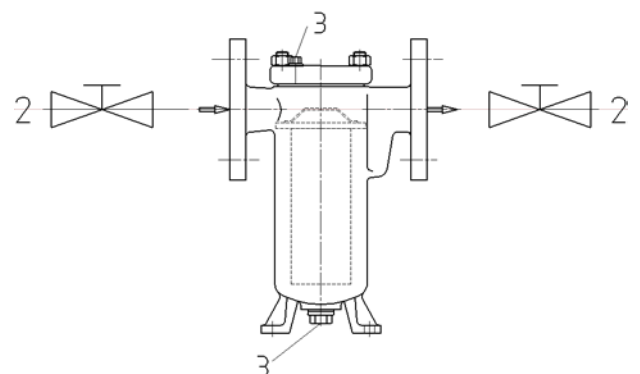


Fig. 5: Preliminary maintenance steps

14.3 Removing the filter cover and Filter element

⚠ DANGER!

The single filter is pressurised!

- ⇒ Risk of injury to persons or damage to property
- Make sure the pipe is depressurised prior to opening the single filter.

1

- Carry out the preliminary maintenance steps (refer to section 14.2).

2

- Loosen and remove the hexagon screws on the filter cover.
- Remove the filter cover.
- Lift the Filter element vertically out of the filter housing without tilting it.

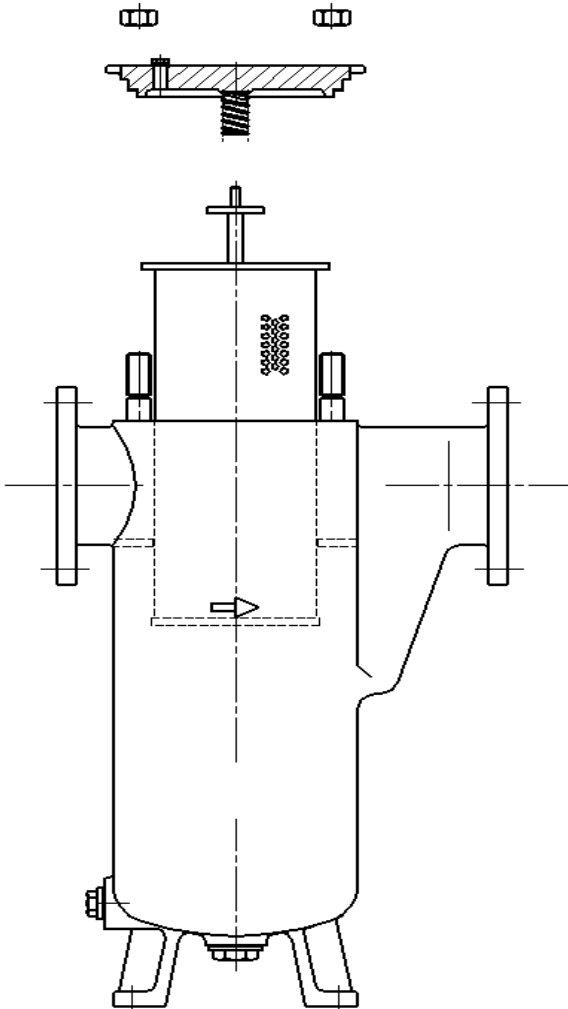


Fig. 6: Removing the filter cover and Filter element

3

- Mount in reverse order

14.4 Cleaning single filter and Filter element

- Carry out the preliminary maintenance steps (refer to section 14.3).
- Clean the Filter element (refer to N2552)

⚠ WARNING!

Danger of aerosol formation!

- All work must be carried out in a room with a suitable extraction system!



14.4.1 Cleaning the filter housing

⚠ WARNING!

Danger of aerosol formation!

- All work must be carried out in a room with a suitable extraction system!



- Wear protective clothing and equipment appropriate to the hazard potential of the medium (e.g. goggles, respirator, protective clothing, etc.).
- Remove any coarse impurities by mechanical means.
- Wash out the filter housing in a suitable cleaning solution.

14.5 Replacing the cover seal

⚠ WARNING!

If the system is maintained by unauthorised persons:

- ⇒ Risk of injury
- ⇒ All warranty claims are rendered invalid
- The system must be maintained by a suitably trained person!

- Remove the filter cover (refer to section 14.3).
- ⇒ The cover seals can now be replaced

15.1 Dimension drawings of the EG1

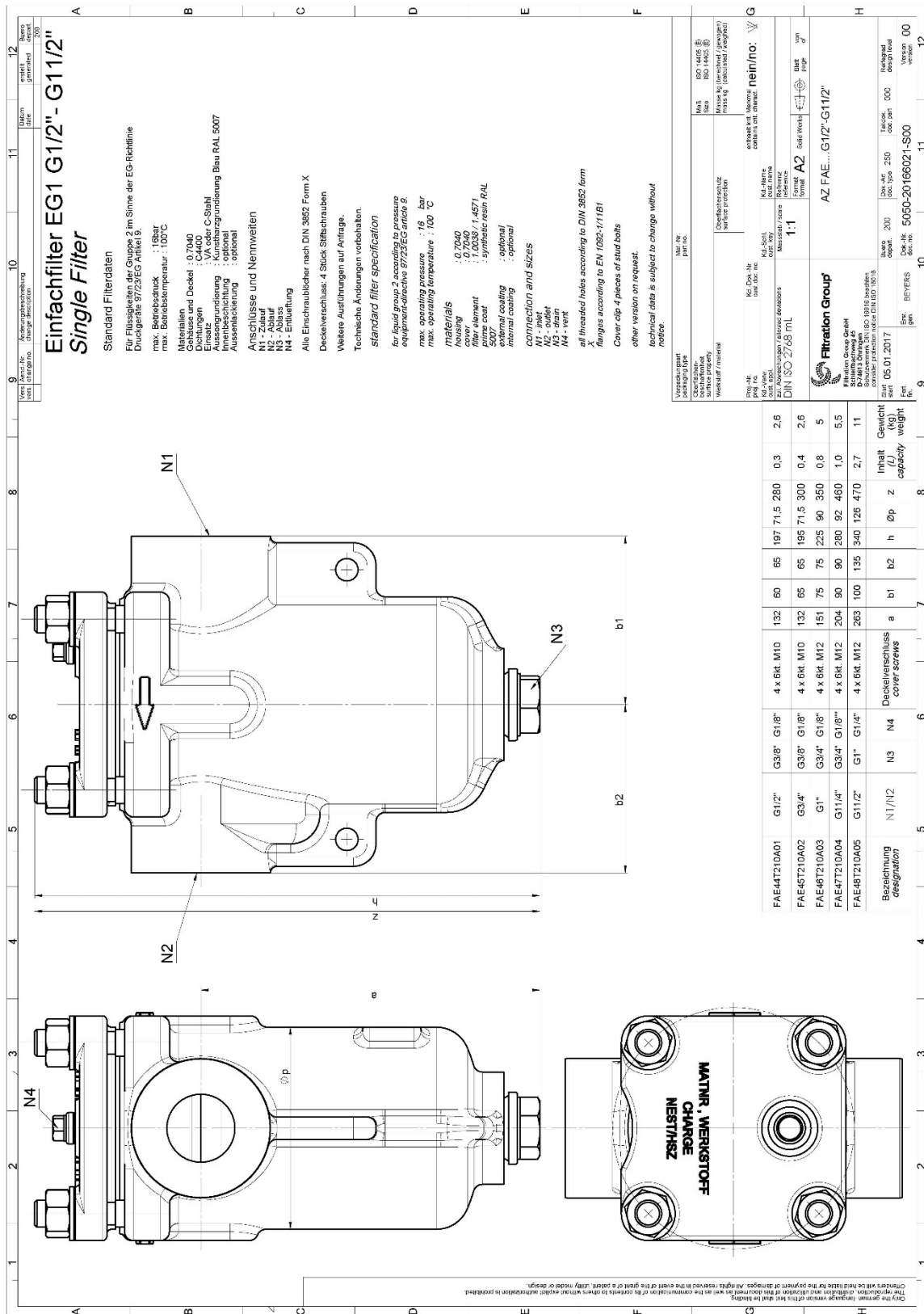
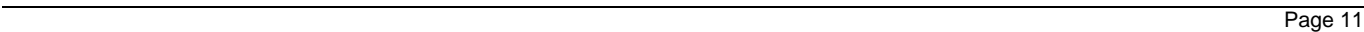


Fig. 7: Dimension drawing of the EG1

Fig. 8: Dimension drawing of the EG2 DN65-DN150



Fig. 9: Dimension drawings of the EG2 DN20-DN50



16 Part drawing

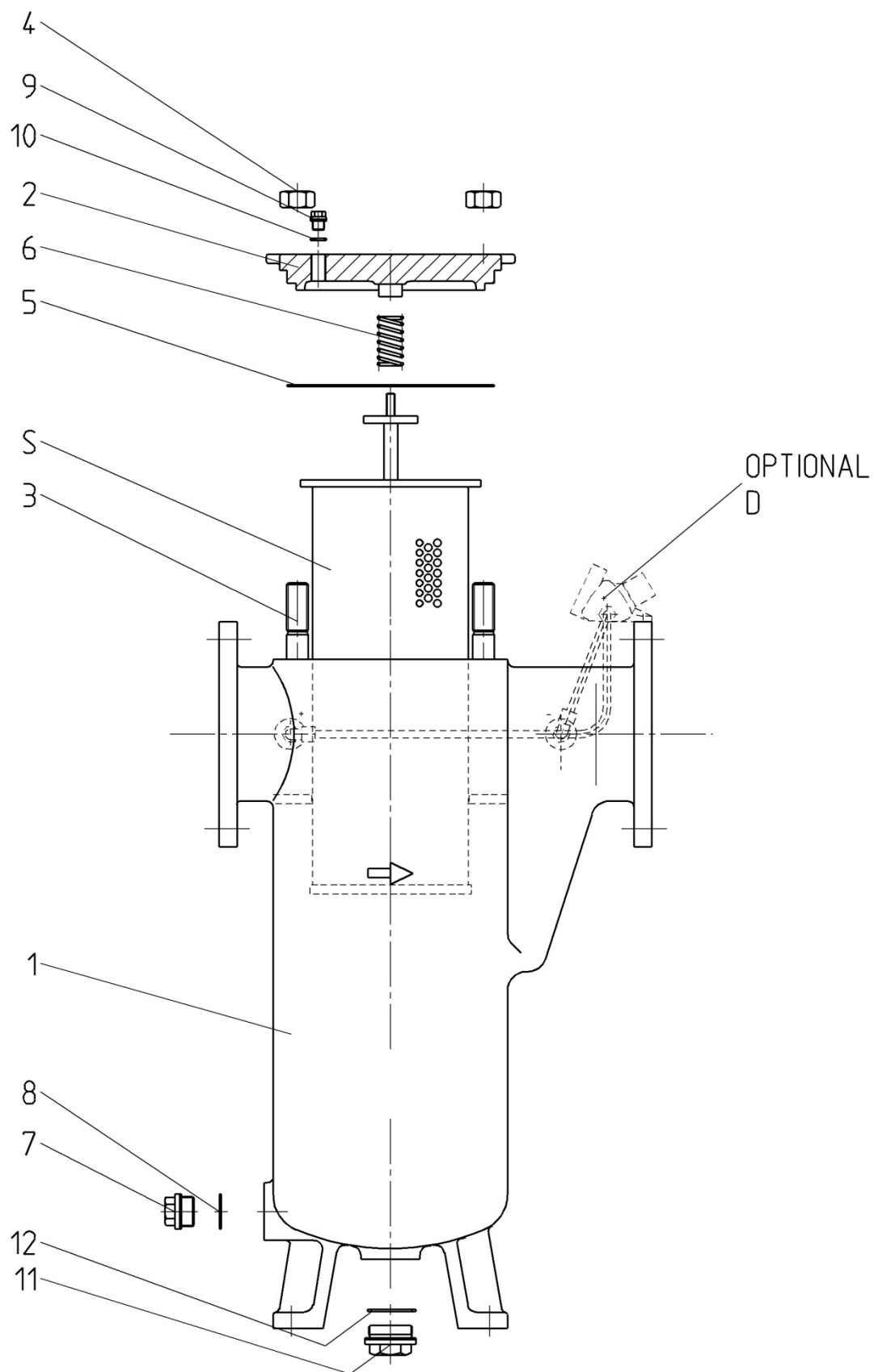


Fig. 10: Part drawing

17 List of parts

17.1 EG2 0.7040

No.	Designation	Qty.	Order no.	Order no.	Order no.	No.
			FAE033210A022000	FAE043210A032000	FAE053210A042000	FAE0673210A052000
1	Housing	1	76227349	76227352	76227294	76227301
2	Cover	1	76236891	76236892	76236892	76236895
3	Stud bolt	4	76231919	76231931	76231931	76231948
4	Hexagon nut	4	76232095	76239502	76239502	76232102
5	Seal (seal kit)	1	72378169	72355335	72355335	72340544
6	Spring	1	76233217	76233217	76233217	76233218
7	Screw plug	1	-	-	-	70011486
8	Sealing ring (seal kit)	1	72378169	72355335	72355335	72340544
9	Screw plug	1	76232306	76232305	76232305	70586177
10	Sealing ring (seal kit)	1	72378169	72355335	72355335	72340544
11	Screw plug	1	77632177	77632177	77632177	70585377
12	Sealing ring (seal kit)	1	72378169	72355335	72355335	72340544
S	Filter element	1	See recommended spare parts in section 18			
D	Differential pressure indicator	1				

No.	Designation	Qty.	Order no.	Order no.	Order no.	No.
			FAE083210A072000	FAE093210A082000	FAE103210A092000	FAE113210A102000
1	Housing	1	76227315	76227363	76227367	76227371
2	Cover	1	76236896	76236897	76236899	76236900
3	Stud bolt	4	70585811	70586250	76231987	70586250
4	Hexagon nut	4	70361081	70361081	70315448	77772007
5	Seal (seal kit)	1	72344099	72367695	72378211	72378212
6	Spring	1	76233218	76233355	76233355	76233219
7	Screw plug	1	70011486	70011486	70011486	70585377
8	Sealing ring (seal kit)	1	72344099	72367695	72378211	72378212
9	Screw plug	1	70586177	70586177	70586177	70586177
10	Sealing ring (seal kit)	1	72344099	72367695	72378211	72378212
11	Screw plug	1	70585377	70011486	70586032	70586032
12	Sealing ring (seal kit)	1	72344099	72367695	72378211	72378212
S	Filter element	1	See recommended spare parts in section 18			
D	Differential pressure indicator	1				

No.	Designation	Qty.	Order no.
			FAE123210A112000
1	Housing	1	76227375
2	Cover	1	76236901
3	Stud bolt	4	76231989
4	Hexagon nut	4	70315448
5	Seal (seal kit)	1	72340545
6	Spring	1	76233219
7	Screw plug	1	70585377
8	Sealing ring (seal kit)	1	72340545
9	Screw plug	1	70586177
10	Sealing ring (seal kit)	1	72340545
11	Screw plug	1	70586032
12	Sealing ring (seal kit)	1	72340545
S	Filter element	1	See recommended spare parts in section 18
D	Differential pressure indicator	1	

17.2 EG2 1.4408

No.	Designation	Qty.	Order no.	Order no.	Order no.	No.
			FAE033210A026000	FAE043210A036000	FAE053210A046000	FAE063210A056000
1	Housing	1	76227348	76227351	76227293	76227300
2	Cover	1	76233277	76233188	76233188	76233278
3	Stud bolt	4	76231916	76231932	76231932	76231952
4	Hexagon nut	4	77771736	77632383	77632383	77869266
5	Seal (seal kit)	1	72378470	72378473	72378473	72378345
6	Spring	1	76233217	76233217	76233217	76233218
7	Screw plug	1	-	-	-	76232285
8	Sealing ring (seal kit)	1	72378470	72378473	72378473	72378345
9	Screw plug	1	76232305	78350803	78350803	78350803
10	Sealing ring (seal kit)	1	72378470	72378473	72378473	72378345
11	Screw plug	1	77632151	76232318	76232318	77633035
12	Sealing ring (seal kit)	1	72378470	72378473	72378473	72378345
S	Filter element	1	See recommended spare parts in section 18			
D	Differential pressure indicator	1				

No.	Designation	Qty.	Order no.	Order no.	Order no.	No.
			FAE083210A076000	FAE093210A086000	FAE103210A096000	
1	Housing	1	76227314	76227362	76227366	
2	Cover	1	76233189	76236734	76233306	
3	Stud bolt	4	76231968	76231971	76231986	
4	Hexagon nut	4	77771991	77771991	77772148	
5	Seal (seal kit)	1	72378475	72367606	72378476	
6	Spring	1	76233218	76233355	76233355	
7	Screw plug	1	77632151	77632151	77632151	
8	Sealing ring (seal kit)	1	72378475	72367606	72378476	
9	Screw plug	1	78350803	78350803	78350803	
10	Sealing ring (seal kit)	1	72378475	72367606	72378476	
11	Screw plug	1	79744954	77633035	77633035	
12	Sealing ring	1	72378475	72367606	72378476	

No.	Designation	Qty.	Order no.	Order no.	Order no.	No.
	(seal kit)					
S	Filter element	1	See recommended spare parts in section 18			
D	Differential pressure indicator	1				

17.3 EG1 GGG40

No.	Designation	Qty.	Order no.	Order no.	Order no.	No.
			FAE44T210A012000	FAE45T210A022000	FAE46T210A032000	FAE47T210A042000
1	Housing	1	76227323	76227329	76227322	76227324
2	Cover	1	76236891	76236891	76236892	76236892
3	Stud bolt	4	76231919	76231919	70585080	70585080
4	Hexagon nut	4	76232095	76232095	76239502	76239502
5,8,10,12	Seal kit	1	72353931	72353931	72355335	72355335
6	Spring	1	76233217	76233217	76233217	76233217
7	Screw plug	1	-	-	-	-
9	Screw plug	1	76232306	76232306	76232305	76232305
11	Screw plug	1	70585394	70585394	77632177	77632177
S	Filter element	1	See recommended spare parts in section 18			
D	Differential pressure indicator	1				

18 Empfohlene Ersatzteile

18.1 EG2 0.7040

No.	Designation	Order no.	Order no.	Order no.	Order no.
		FAE033210A022000	FAE043210A032000	FAE053210A042000	FAE06/73210A052200
S	Filter element	See name-plate			
5,8,10,12	Seal kit	72367695	72355335	72355335	72340544
6	Spring	76233217	76233217	76233217	76233218
D	Differential pressure indicator	Optional			

No.	Designation	Order no.	Order no.	Order no.	Order no.	Order no.
		FAE083210A072000	FAE093210A082000	FAE103210A092000	FAE113210A102000	FAE123210A112000
S	Filter element	See name-plate				
5,8,10,12	Seal kit	72344099	72367695	72378211	72378212	72340545
6	Spring	76233218	76233355	76233355	76233219	76233219
D	Differential pressure indicator	Optional				

18.2 EG2 1.4408

No.	Designation	Order no.	Order no.	Order no.	Order no.
		FAE033210A026000	FAE043210A062000	FAE053210A046000	FAE063210A056000
S	Filter element	See name-plate			
5,8,10,12	Seal kit	72367695	72378473	72378473	72378345
6	Spring	76233217	76233217	76233217	76233218
D	Differential pressure indicator	optional			

No.	Designation	Order no.	Order no.	Order no.	Order no.
		FAE083210A076000	FAE093210A086000	FAE103210A096000	
S	Filter element	See name-plate			
5,8,10,12	Seal kit	72367695	72367606	72378476	
6	Spring	76233218	76233355	76233355	
D	Differential pressure indicator	Optional			

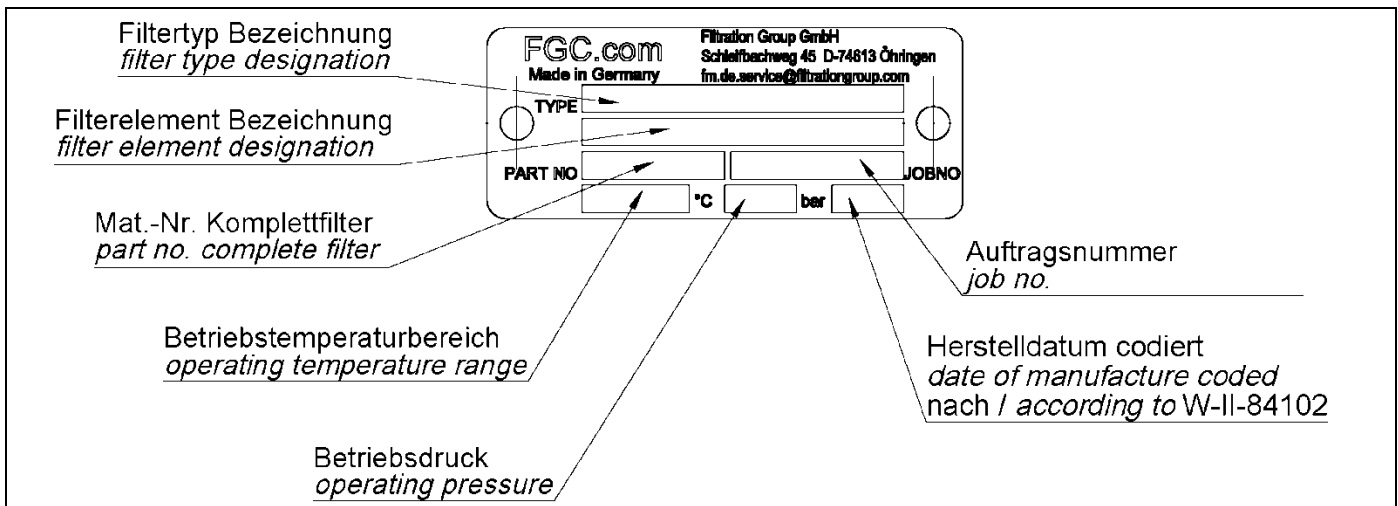
18.3 EG1 0.7040

No.	Designation	Order no.	Order no.	Order no.	Order no.
		FAE44T210A012000	FAE45T210A022000	FAE46T210A032000	FAE47T210A042000
S	Filter element	See name-plate			
5,8,10,12	Seal kit	72367695	72353931	72355335	72355335
6	Spring	76233217	76233217	76233217	76233217
D	Differential pressure indicator				



Please request a separate spare parts drawing and list of spare parts for special versions.

19 Name-plate



EU – Einbauerklärung
EU Declaration of incorporation
Déclaration relative au montage UE



Der Hersteller
The manufacturer
Le producteur

Filtration Group GmbH
Schleifbachweg 45
D-74613 Öhringen
Phone +49 7941 6466-0
Fax +49 7941 6466-429

erklärt hiermit, dass das folgende Produkt
hereby declares that the following product
déclare par la présente que le produit suivant

Produktbezeichnung:
Product designation:
Désignation du produit :

Einfachfilter
simple filter
simple filtre

Typenbezeichnung:
Type designation:
Désignation du type :

EG1/EG2

Funktionsbeschreibung:
Machine description:
Description du fonctionnement :

Filtration von Feststoffen
Filtration of solids
Filtration de solides

den in der Anlage dargestellten grundlegenden Anforderungen der Richtlinie 2006/42/EU entspricht.
conforms to the essential requirements of the Machinery Directive 2006/42/EU pursuant to the Annex.
répond aux exigences fondamentales de la directive 2006/42/UE, décrites en annexe.

Die unvollständige Maschine darf erst dann in Betrieb genommen werden, wenn festgestellt wurde, dass die Maschine, in die die unvollständige Maschine eingebaut werden soll, den Bestimmungen der Richtlinie 2006/42/EU über Maschinen entspricht.
The partly completed machinery must not be put into service until the relevant machinery into which this partly completed machinery is to be incorporated has been declared in conformity with the Machinery Directive 2006/42/EU.
La machine incomplète ne doit être mise en service qu'après avoir déterminé que la machine, dans laquelle la machine incomplète doit être montée, correspond aux dispositions de la directive machines 2006/42/UE.

Folgende harmonisierten Normen wurden angewandt:

The following harmonised standards have been used:

DIN EN ISO 12100:2011-03, DIN EN ISO 4414:2011-04

Les normes harmonisées ci-dessous ont été appliquées :

Der Hersteller verpflichtet sich, die speziellen Unterlagen zur unvollständigen Maschine, einzelstaatlichen Stellen auf Verlangen schriftlich zu übermitteln. Die zur Maschine gehörenden speziellen technischen Unterlagen nach Anhang VII Teil B wurden erstellt.

The manufacturer undertakes to transmit any specific documentation on the partly completed machinery to the appropriate national authorities in writing on request. All specific technical documentation belonging to the machinery has been compiled pursuant to Annex VII Section B.

Le fabricant s'engage à transmettre les documents spécifiques à la machine incomplète par écrit aux administrations nationales respectives sur leur demande. Les documents techniques spécifiques selon Annexe VII partie B faisant partie de la machine ont été établis.

Dokumentationsverantwortlicher/Abteilung:
Responsible for documentation/department:
Responsable de la documentation/Service :

Filtration Group GmbH
Schleifbachweg 45
74613 Öhringen

Unterzeichner:
Signatory:
Signataire :

Wolfram Zuck
Dipl.-Ing. (FH) Industrial Engineering
Managing Director, Plant Manager Öhringen

Öhringen,

16.5.17

Datum/Date/Date

Unterschrift/Signature/Signature

Anlage/Annex/Annexe

3 Seiten/pages/pages

Anlage zur Einbauerklärung gemäß Richtlinie
2006/42/EU für Einfachfilter
Annex to the Declaration of Incorporation pursuant to
the Machinery Directive 2006/42/EU for simple filter
Annexe à la déclaration de montage selon la directive
2006/42/UE pour simple filtre



Beschreibung der grundlegenden Sicherheits- und Gesundheits-
schutzanforderungen (soweit zutreffend) gemäß 2006/42/EU, An-
hang 1, die zur Anwendung kommen und eingehalten wurden.
List of the essential health and safety requirements (where applicable)
pursuant to 2006/42/EU, Annex 1, applied and fulfilled.
Description des exigences fondamentales relatives à la sécurité et à
la protection de la santé (si applicables) selon 2006/42/UE, annexe 1,
appliquées et respectées.

Grundlegende Anforderung Essential requirements Exigence fondamentale	Erfüllt Fulfilled Remplie
Grundsätze für die Integration der Sicherheit Principles of safety integration Principes d'intégration de la sécurité	ja yes oui
Materialien und Produkte Materials and products Matériaux et produits	ja yes oui
Konstruktion der unvollständigen Maschine im Hinblick auf die Handhabung Design of the partly completed machinery to facilitate its handling La construction de la incomplète machine pour faciliter la manipulation	ja yes oui
Steuerungen und Befehlseinrichtungen Control systems Commandes et dispositifs de commande	nein no non
Risiko des Verlusts der Standsicherheit Risk of loss of stability Risque de perte de la stabilité statique	ja yes oui
Bruchrisiko beim Betrieb Risk of break-up during operation Risque de rupture en fonctionnement	ja yes oui
Risiken durch herabfallende oder herausgeschleuderte Gegenstände Risks due to falling or ejected objects Risques dus à la chute ou à l'éjection d'objets	ja yes oui
Risiken durch Oberflächen, Kanten und Ecken Risks due to surfaces, edges or angles Risques dus aux surfaces, arêtes et angles	ja yes oui
Risiken durch Änderung der Verwendungsbedingungen Risks related to variations in operating conditions Risques dus à la modification des conditions d'utilisation	ja yes oui
Risiken durch bewegliche Teile Risks related to moving parts Risques dus à des parties mobiles	ja yes oui
Wahl der Schutzeinrichtung gegen Risiken durch bewegliche Teile Choice of protection against risks arising from moving parts Choix du dispositif de protection contre les risques dus à des parties mobiles	ja yes oui
Risiko unkontrollierter Bewegungen Risks of uncontrolled movements Risque de mouvements incontrôlés	ja yes oui
Anforderungen an Schutzeinrichtungen Required characteristics of guards and protective devices Exigences relatives aux dispositifs de protection	nein no non
Elektrische Energieversorgung Electricity supply Alimentation électrique	ja yes oui
Statische Elektrizität Static electricity Electricité statique	ja yes oui

Nichtelektrische Energieversorgung Energy supply other than electricity Alimentation en énergie non-électrique	ja yes oui
Montagefehler Errors of fitting Erreurs de montage	ja yes oui
Extreme Temperaturen Extreme temperatures Températures extrêmes	ja yes oui
Brand Fire Incendie	ja yes oui
Explosion Explosion Explosion	ja yes oui
Lärm Noise Bruit	ja yes oui
Vibrationen Vibrations Vibrations	ja yes oui
Strahlung Radiation Rayonnement	ja yes oui
Strahlung von außen External radiation Rayonnement depuis l'extérieur	nein no non
Emission gefährlicher Werkstoffe und Substanzen Emissions of hazardous materials and substances Emission de substances et matériaux dangereux	ja yes oui
Risiko, in eine Maschine eingeschlossen zu werden Risk of being trapped in a machine Risque de se faire enfermer dans une machine	nein no non
Ausrutsch-, Stolper- und Sturzrisiko Risk of slipping, tripping or falling Risque de dérapage, de trébuchement et de chute	nein no non
Blitzschlag Lightning Foudre	nein no non
Wartung der unvollständigen Maschine Maintenance of the incomplete machine Entretien de la incomplète machine	ja yes oui
Zugang zu den Bedienungsständen und den Eingriffspunkten für die Instandhaltung Access to operating positions and servicing points Accès aux postes de commande et aux points d'intervention pour la maintenance	nein no non
Trennung von den Energiequellen Isolation of energy sources Séparation des sources d'énergie	nein no non
Eingriffe des Bedienungspersonals Operator intervention Interventions des opérateurs	ja yes oui
Reinigung innen liegender Maschinenteile Cleaning of internal parts Nettoyage de parties internes de la machine	ja yes oui
Informationen und Warnhinweise an der Maschine Information and warnings on the machinery Informations et avertissements sur la machine	ja yes oui
Warnung vor Restrisiken Warning of residual risks Avertissement quant aux risques résiduels	ja yes oui
Kennzeichnung der Maschinen Marking of machinery Marquage des machines	nein no non

Betriebsanleitung Instructions Mode d'emploi	ja yes oui
Unvollständige Nahrungsmittelmaschinen und unvollständige Maschinen für kosmetische oder pharmazeutische Erzeugnisse Incomplete foodstuffs machinery and incomplete machinery for cosmetics or pharmaceutical products Incomplète machines pour denrées alimentaires et incomplète machines pour produits cosmétiques ou pharmaceutiques	ja yes oui
Handgehaltene und/oder handgeführte tragbare Maschinen Portable hand-held and/or hand-guided machinery Machines tenues à la main et/ou portables guidées à la main	nein no non

21 Declaration of conformity

EU – Konformitätserklärung
EU declaration of conformity
Déclaration de conformité UE



Der Hersteller
The manufacturer
Le producteur

Filtration Group GmbH
Schleifbachweg 45
D-74613 Öhringen
Phone +49 7941 6466-0
Fax +49 7941 6466-429

erklärt hiermit, dass das folgende Produkt
hereby declares that the following product
déclare par la présente que le produit suivant

Produktbezeichnung:
Product designation:
Désignation du produit :

Einfachfilter
simple filter
simple filtre

Typenbezeichnung:
Type designation:
Désignation du type :

EG1/EG2

Funktionsbeschreibung:
Machine description:
Description du fonctionnement :

Filtration von Feststoffen
Filtration of solids
Filtration de solides

allen einschlägigen Bestimmungen der Druckgeräterichtlinie 97/23/EU, Anhang 1 entspricht.
conforms to all relevant provisions of the pressure equipment directive 97/23/EU, annex I.
répond à toutes les dispositions applicables de la directive équipements sous pression 97/23/UE , annexe I .

Angewendete harmonisierte Normen, insbesondere
Applied harmonized standards in particular
Normes harmonisées utilisées, notamment

AD 2000

Angewendete nationale Normen und technische Spezifikationen, insbesondere
Applied national norms and techn. specifications, especially
Normes et spécifications nationales utilisées, notamment

HP0, TRD/TRB

Und allen wesentlichen Schutzanforderungen der Ex-Richtlinie 94/9/EU entspricht.
Conforms to all the basic requirements of the Ex-directive 94/9/EU.
Répond à toutes les exigences essentielles de la Ex-directive 94/9/UE .

Folgende harmonisierten Normen wurden angewandt:
The following harmonised standards have been used:
Les normes harmonisées ci-dessous ont été appliquées :


EN 1127-1 und EN 13463-1

Unterzeichner:
Signatory:
Signataire :

Wolfram Zuck
Dipl.-Ing. (FH) Industrial Engineering
Managing Director, Plant Manager Öhringen

Öhringen,

16.5.17
Datum/Date/Date


Unterschrift/Signature/Signataire

22 Index

C		
Cleaning the automatic filter	8	
Concentrate	5, 6, 7	
Contract documentation	3	
D		
Differential pressure	3	
Dimension drawing	9	
Drain valve	3, 7	
E		
Environmental protection	3	
F		
Filter cake	3	
Filter cartridge	4	
Filter insert	5, 6, 7, 8	
Functional description	4	
Functional test	6	
G		
Gear motor	8	
I		
Initial differential pressure	3	
Inlet	6	
Installation on discharge side	6	
L		
Leakage	2	
M		
Manufacturer	2, 3	
P		
P 3		
Preliminary maintenance steps	7	
Protective equipment	7	
R		
Removing the gear motor	8	
Replacing the cartridge seals	8	
Risks	2	
S		
Safety instructions	2	
Seaworthy packaging	5	
Suspension	3	
V		
Valves	3	
W		
Warning symbols	2	



Filtration Group GmbH
Schleifbachweg 45
D-74613 Öhringen
Phone +49 7941 6466-0
Fax +49 7941 6466-429
fm.de.sales@filtrationgroup.com
www.filtrationgroup.com
70580771.104.12/2017